



FORMATION TESTER  
TIME LOG  
BUILD-UP PLOTS

COMPANY	ORIGIN ENERGY RESOURCES LIMITED						
WELL	CHILDERS COVE 1						
FIELD	ONSHORE OTWAY BASIN						
PROVINCE/COUNTRY	VICTORIA						
COUNTRY/STATE	AUSTRALIA						
LOCATION	38DEG29'31.96"S 142DEG44'46.66"E <b>FIELD PRINT</b>						
LSD	SEC	TWP	RGE	Other Services			
API Number				MCG-MPD-MDN			
Permit Number	PEP 154			MMR-MDL-MSS			
Permanent Datum GROUND LEVEL, Elevation 50				metres		Elevations:	
Log Measured From R.T. @ 5.3 METRE above Permanent Datum						KB	51.50 metres
Drilling Measured From R.T.						DF	51.50 metres
Date	04-Oct-2005					GL	46.20 metres
Run Number	THREE						
Depth Driller	2658.00			metres			
Depth Logger	2557.50			metres			
First Reading	2554.50			metres			
Last Reading	2535.70			metres			
Casing Driller	544.50			metres			
Casing Logger	544.20			metres			
Bit Size	8.50			inches			
Hole Fluid Type	KCL/PHPA/POL						
Density / Viscosity	1.15	g/cc	59.00	CP			
PH / Fluid Loss	8.60		4.00	ml/30Min			
Sample Source	FLOWLINE						
Rm @ Measured Temp	0.65 @ 13.9			ohm-m			
Rmf @ Measured Temp	1.06 @ 13.9			ohm-m			
Rmc @ Measured Temp	0.53 @ 14.1			ohm-m			
Source Rmf / Rmc	FILTER			PRESS			
Rm @ BHT	0.09 @ 95.5			ohm-m			
Time Since Circulation	32 HOURS						
Max Recorded Temp	95.50			deg C			
Equipment Name	MFT						
Equipment / Base	8			SALE			
Recorded By	G. MCMANUS, B. MOSS						
Witnessed By	BRIAN WEB						
CIRC. STOP	13:00 3/10						

BOREHOLE RECORD				
Bit Size inches		Depth From metres	Depth To metres	
8.500		544.50	2658.00	
CASING RECORD				
Type	Size inches	Depth From metres	Shoe Depth metres	Weight pounds/ft
K-55	9.625	0.00	544.50	36.00

REMARKS
1) SOFTWARE ISSUE: JUN 17, 2004.
2) CUSTOMER SCALES AND INTERVALS LOGGED.
3) HFS, MCG, MFT RAN IN COMBINATION.
4) HARDWARE: MFT: 2 X BOWSPRING CENTRALISERS MCG: 1 X BOWSPRING CENTRALISERS
5) SERVICE ORDER: 2072
6) RIG:CENTURY 7
7) DUE TO FAILURE OF PRIMARY MFT 8, MFT 17 USED IN PLACE. THIS LOG DISPLAYS MFT 8 DATA ONLY.

MFT / RFS - QUARTZ TEST SUMMARY										
Test No.	Depth metres	TVD metres	Hyd Pres Before psig	Drawdown Pressure 1 psig	Drawdown Pressure 2 psig	Final Shut- in Pressure psig	Hyd Pres After psig	Mobility 1 md/cp	Mobility 2 md/cp	Remarks
1	2535.71	2535.71	4254.98	0.00	0.00	3569.04	4254.87	0.000	0.000	GOOD TEST
2	2546.21	2546.21	4272.13	0.00	0.00	3583.74	4271.96	0.000	0.000	GOOD TEST
3	2554.50	2554.50	4285.37	0.00	0.00	3595.53	4284.86	0.000	0.000	GOOD TEST

All interpretations are opinions based on inferences from electrical or other measurements and we cannot, and do not, guarantee the accuracy or correctness of any interpretations, and we shall not, except in the case of gross or wilful negligence on our part, be liable or responsible for any loss, costs, damages or expenses incurred or sustained by anyone resulting from any interpretation made by any of our officers, agents or employees. These interpretations are also subject to our general terms and conditions in our price schedule.

↓

GAMMA PASS 2 @ 2570 m

↓

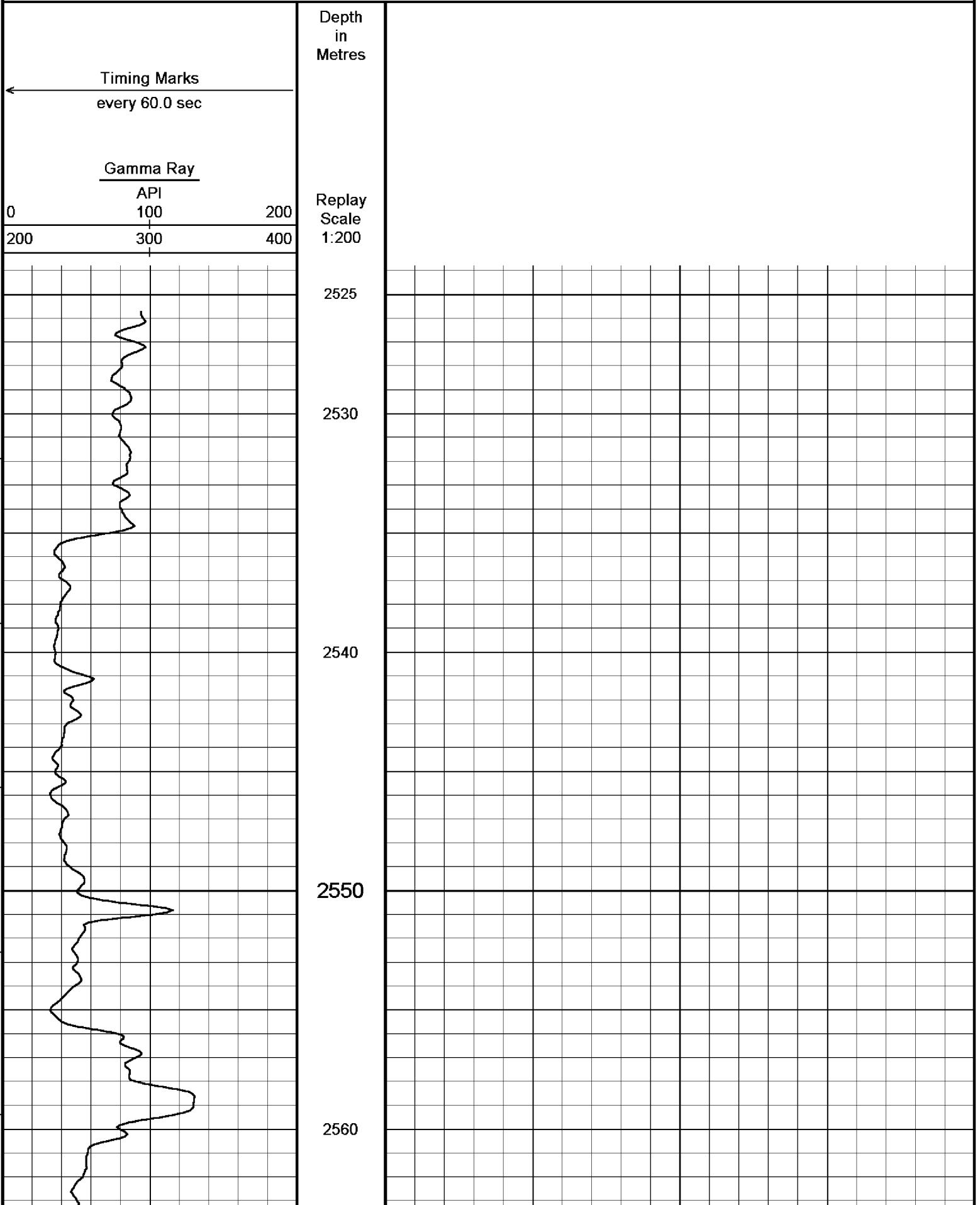
Depth Based Data - Maximum Sampling Increment 10.0cm

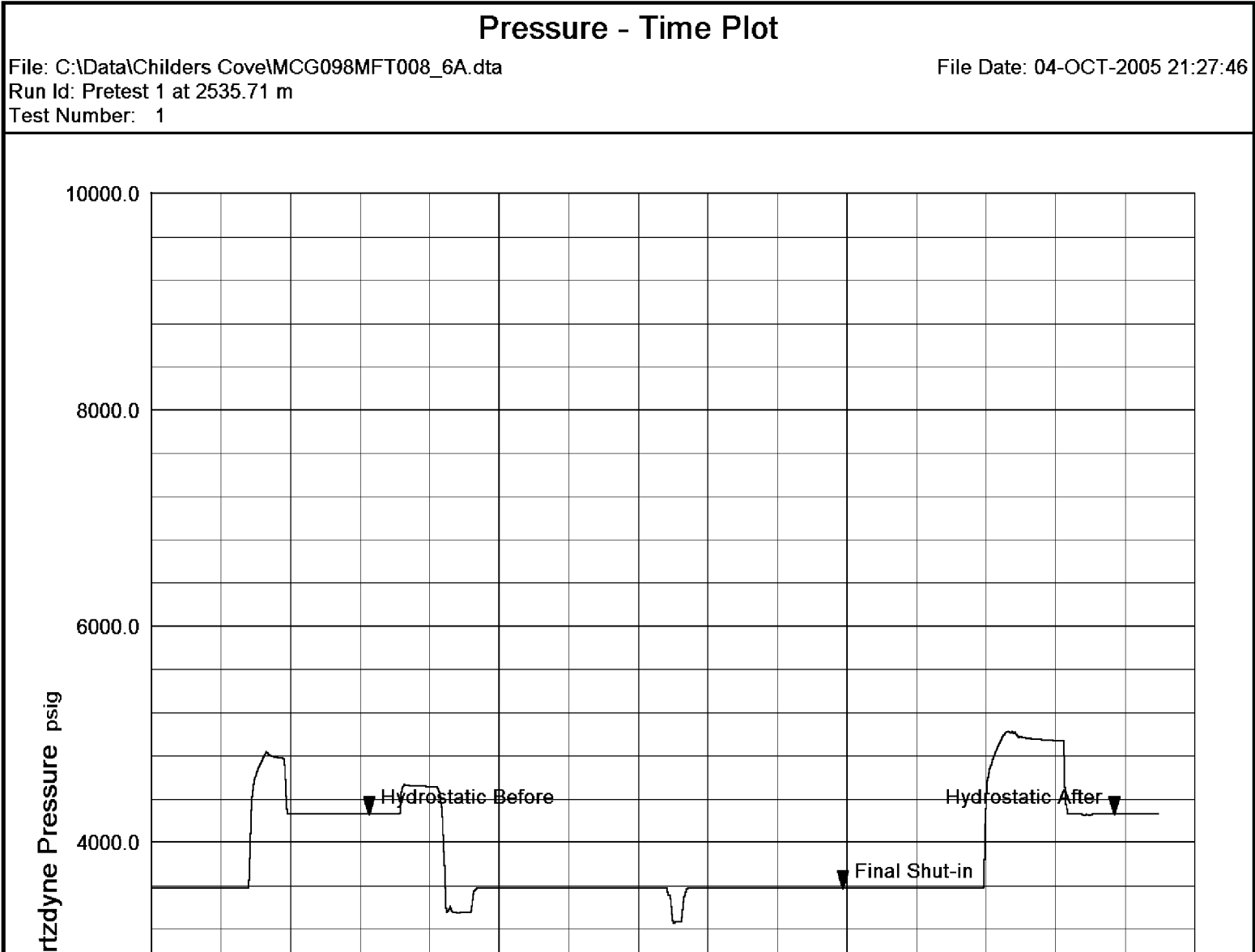
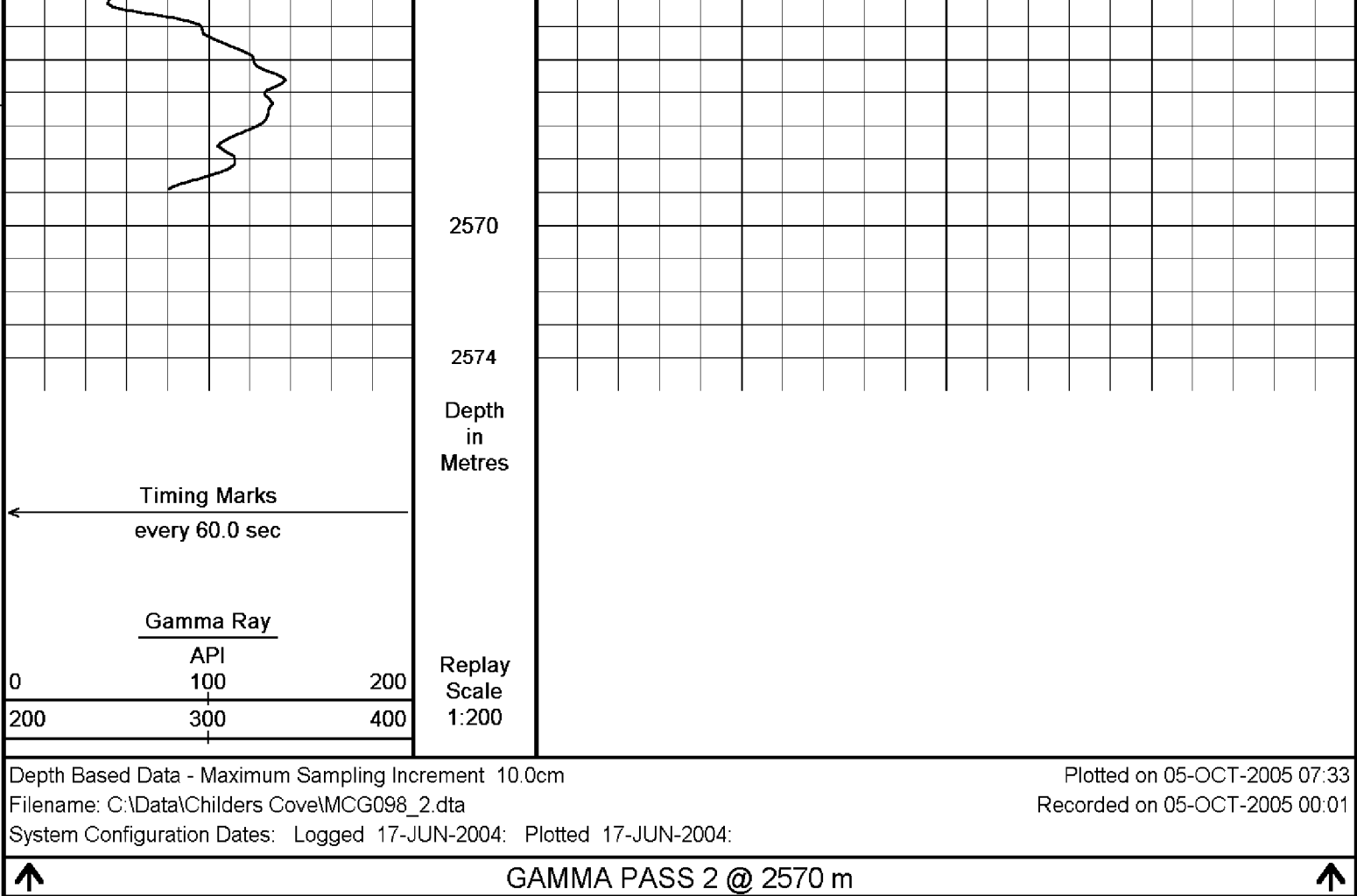
Plotted on 05-OCT-2005 07:33

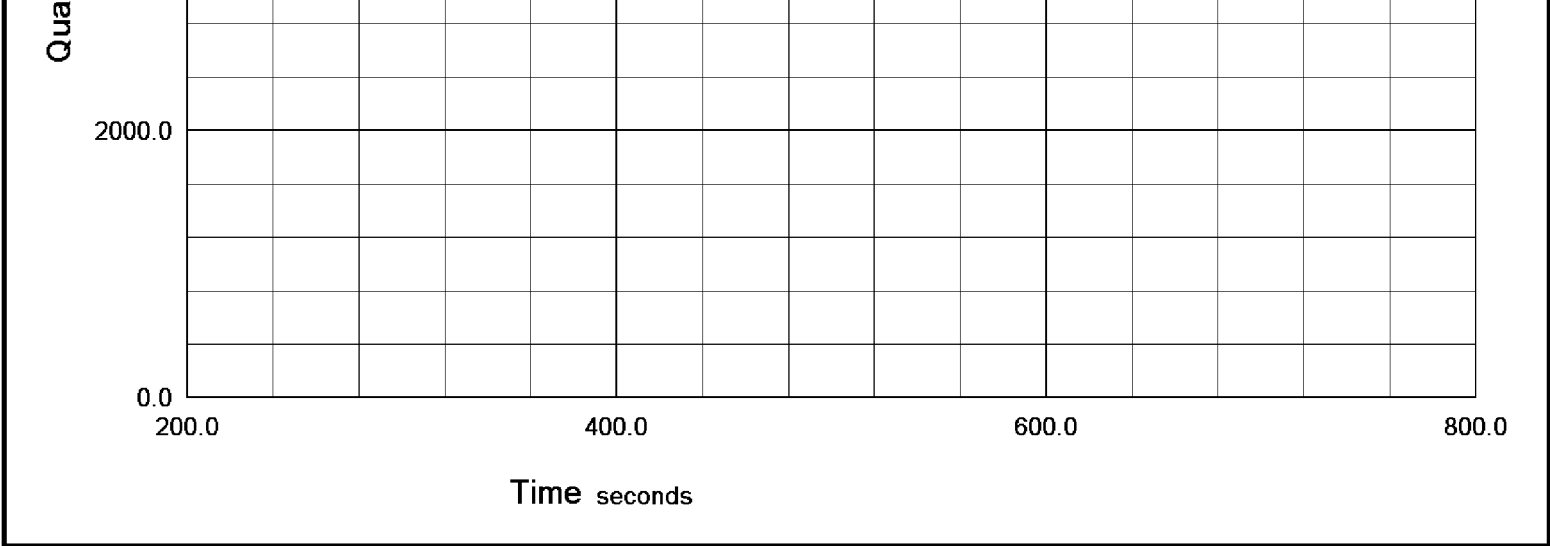
Filename: C:\Data\Childers Cove\MCG098\_2.dta

Recorded on 05-OCT-2005 00:01

System Configuration Dates: Logged 17-JUN-2004: Plotted 17-JUN-2004:



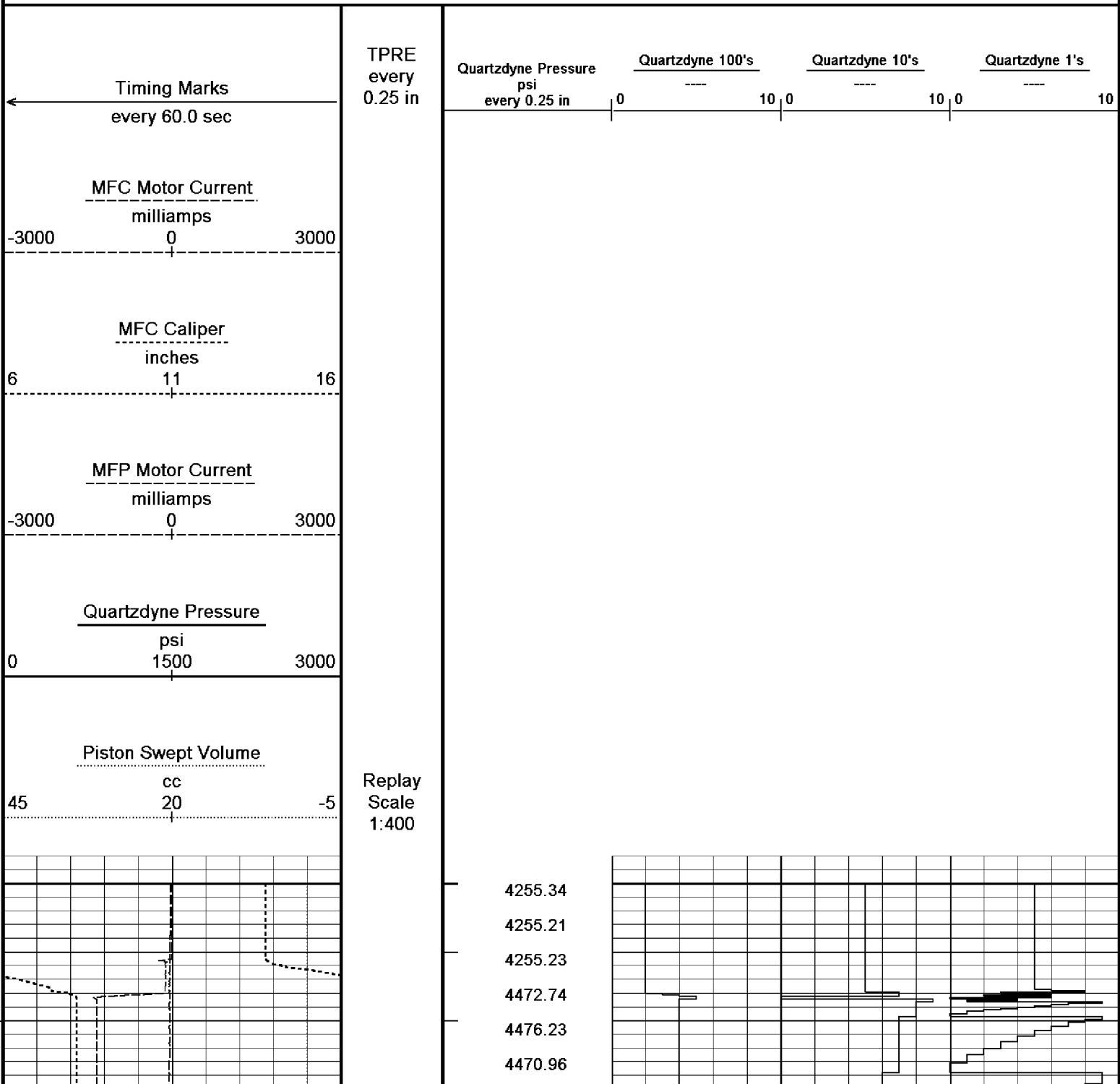


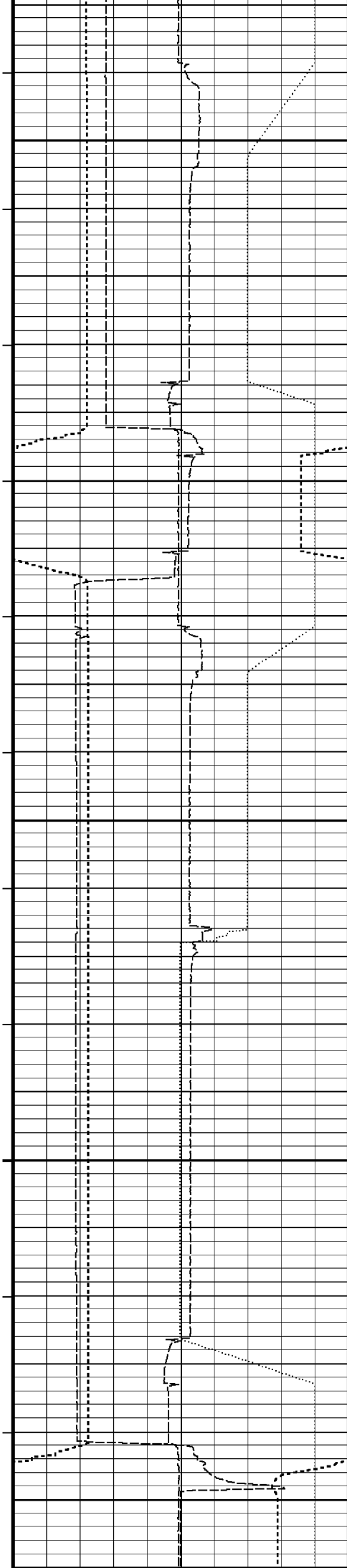


↓ Pretest 1 at 2535.71 m ↓

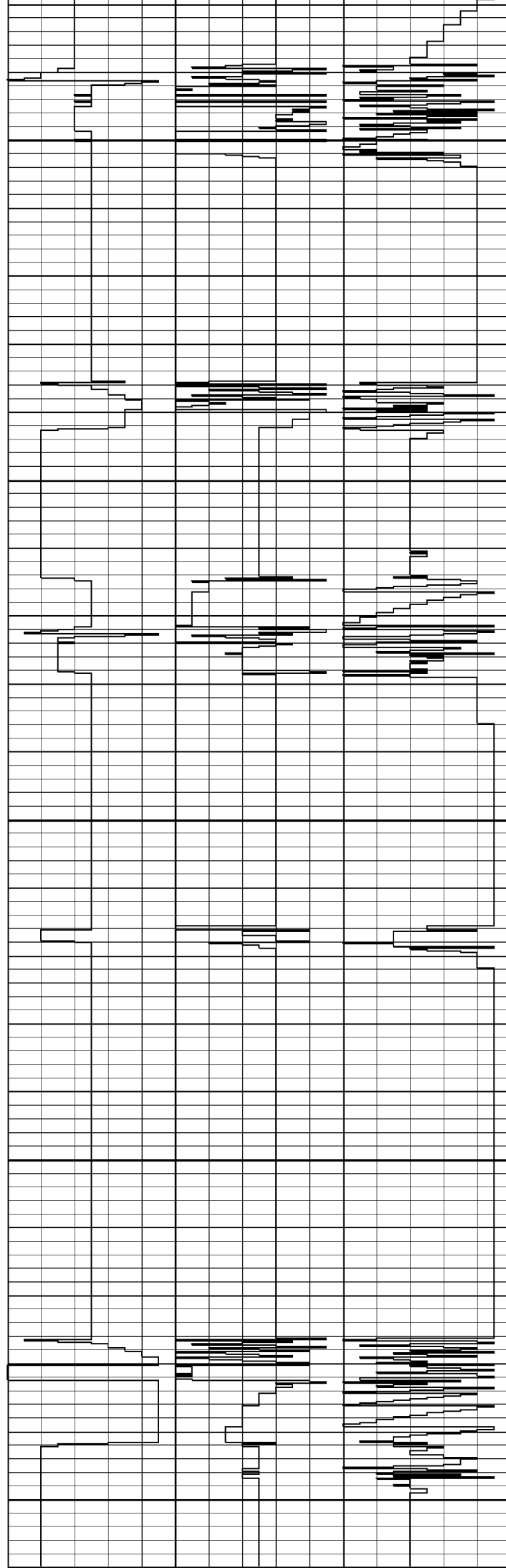
Time Based Data - Notional Logging Speed 10.00 metres/min  
Filename: C:\Data\Childers Cove\MCG098MFT008\_6A.dta  
System Configuration Dates: Logged 17-JUN-2004: Processed 17-JUN-2004: Plotted 17-JUN-2004:

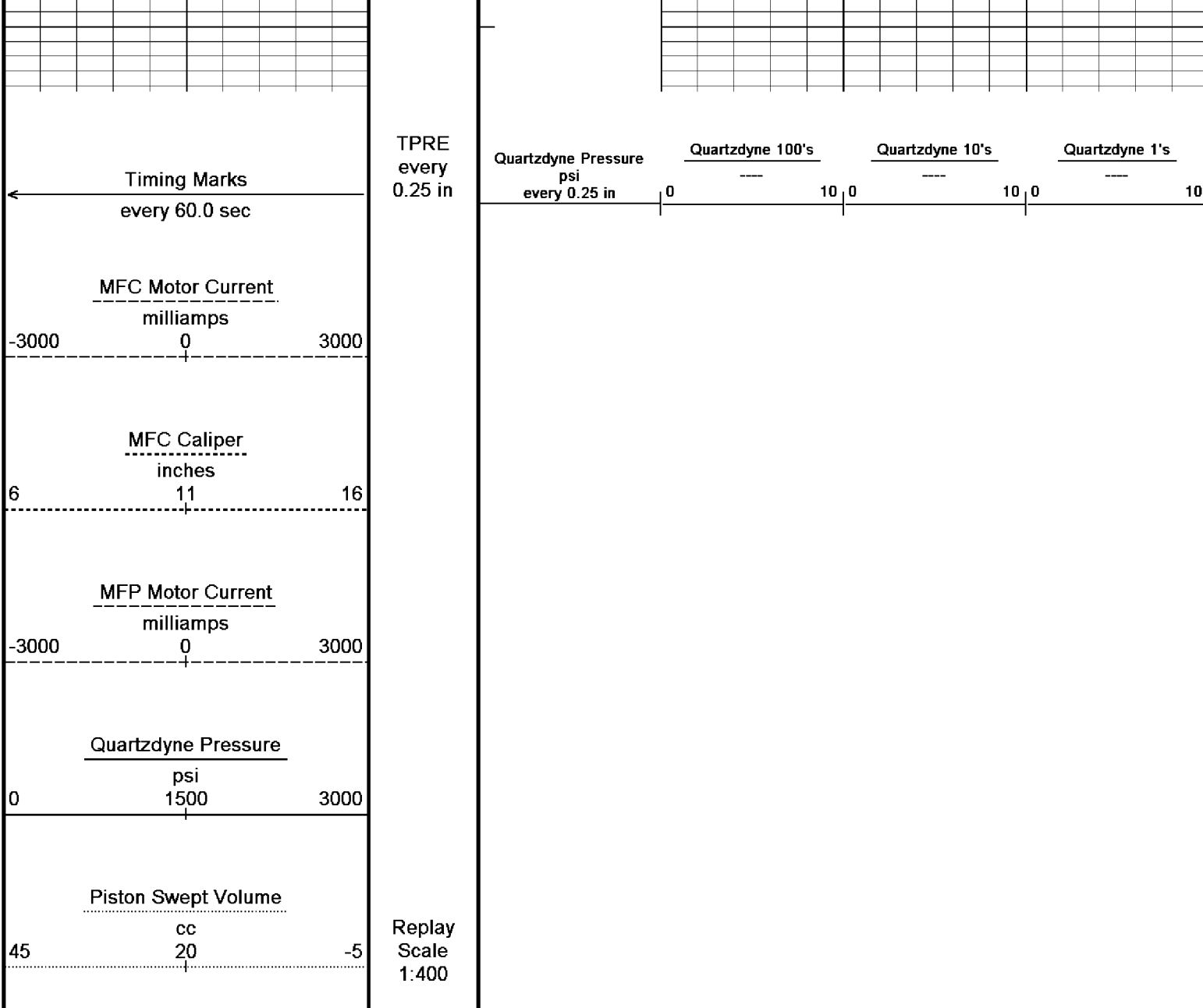
Plotted on 05-OCT-2005 07:33  
Recorded on 04-OCT-2005 21:25





	4467.76
	4465.51
11.99	3722.27
27.01	3460.01
42.03	3501.81
57.59	3568.96
72.61	3568.97
88.22	3568.97
103.24	3568.97
118.22	3568.98
133.83	3568.99
10.81	4696.99
26.38	4351.80
41.40	4254.92
56.38	4254.95
71.97	4254.97
86.99	4254.93
102.58	4515.50
9.60	3714.53
24.58	3345.85
40.18	3568.96
55.17	3569.01
70.77	3569.03
85.79	3569.03
100.81	3569.03
116.40	3569.04
131.37	3569.04
16.09	3559.90
29.99	3569.02
44.99	3569.04
60.61	3569.03
75.60	3569.04
91.21	3569.04
106.21	3569.04
121.20	3569.05
136.81	3569.05
151.82	3569.06
167.42	3569.06
182.39	3569.07
11.39	4944.98
26.99	4957.44
42.00	4938.46
57.63	4256.73
72.62	4254.85
87.59	4254.91





Time Based Data - Notional Logging Speed 10.00 metres/min  
Filename: C:\Data\Childers Cove\MCG098MFT008\_6A.dta  
System Configuration Dates: Logged 17-JUN-2004: Processed 17-JUN-2004: Plotted 17-JUN-2004:

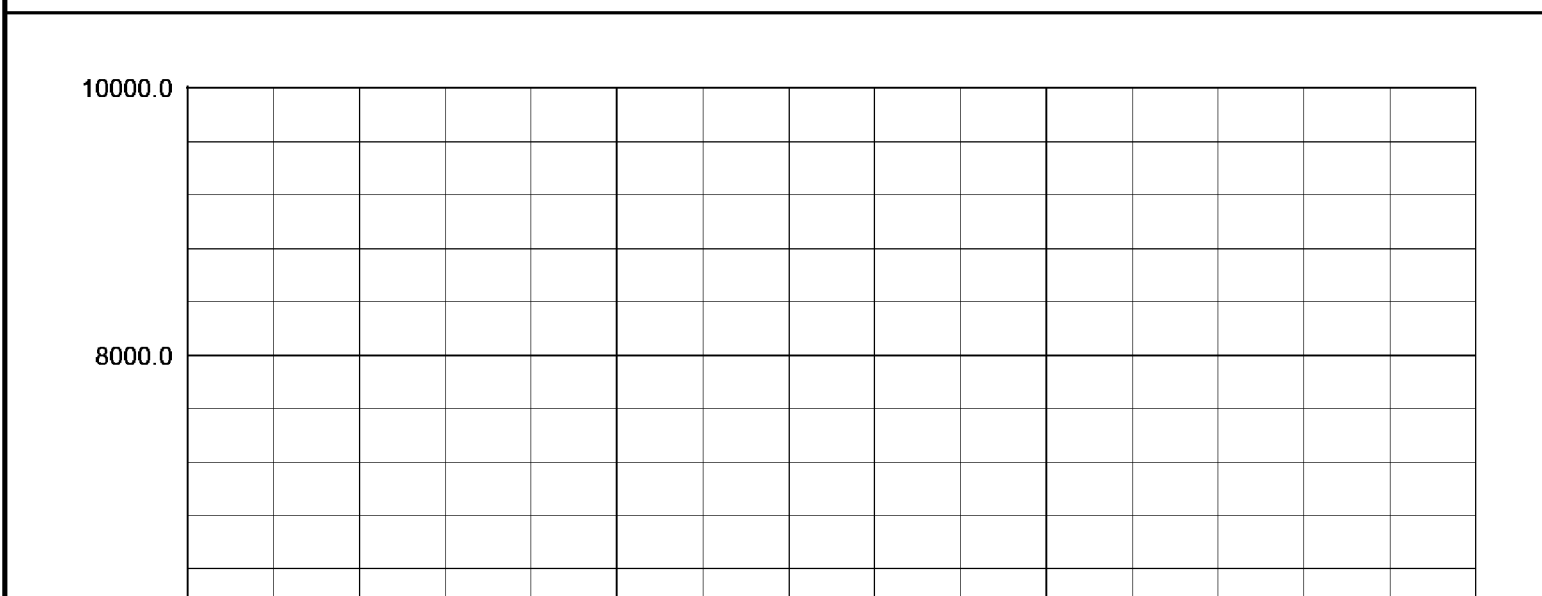
Plotted on 05-OCT-2005 07:33  
Recorded on 04-OCT-2005 21:25

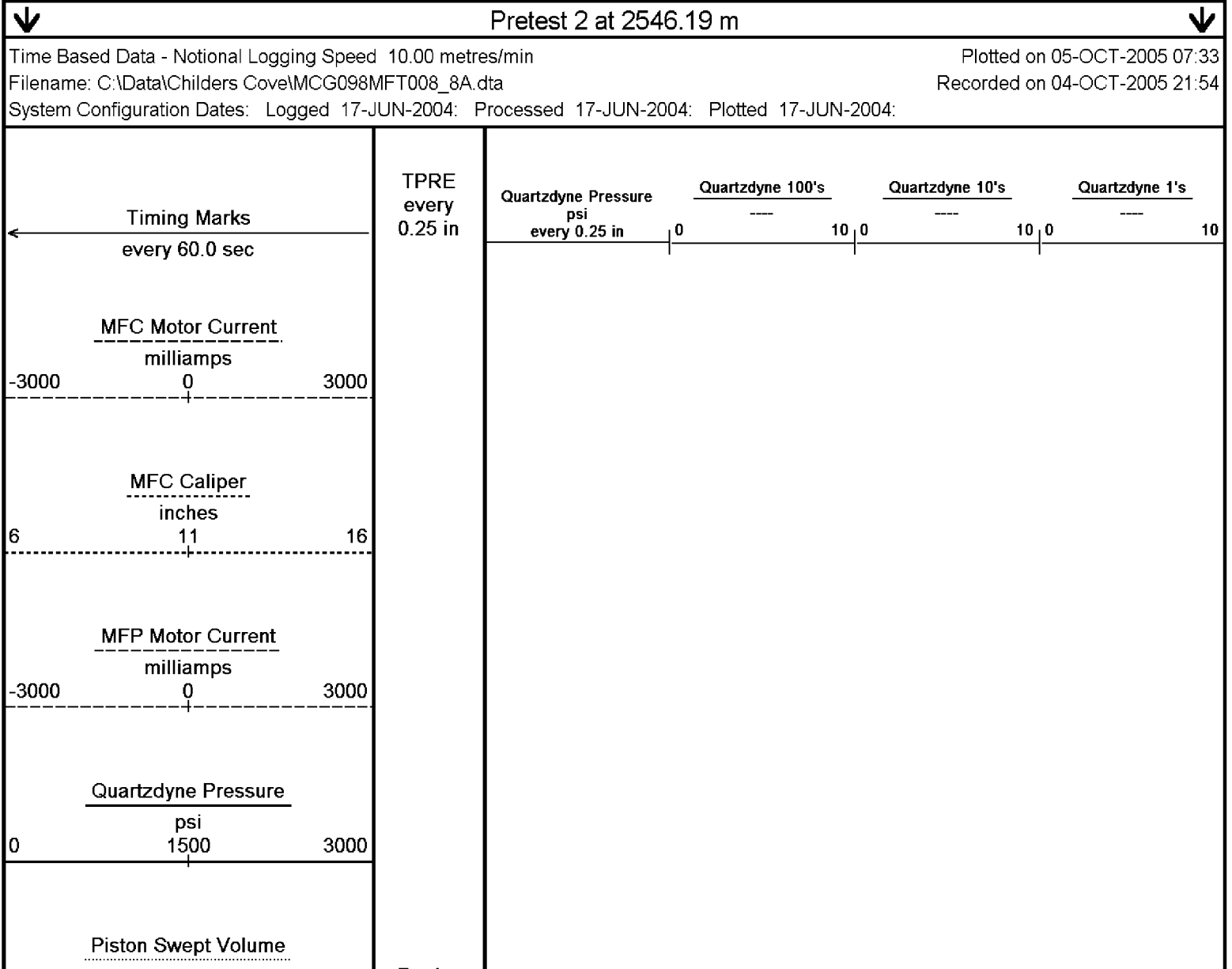
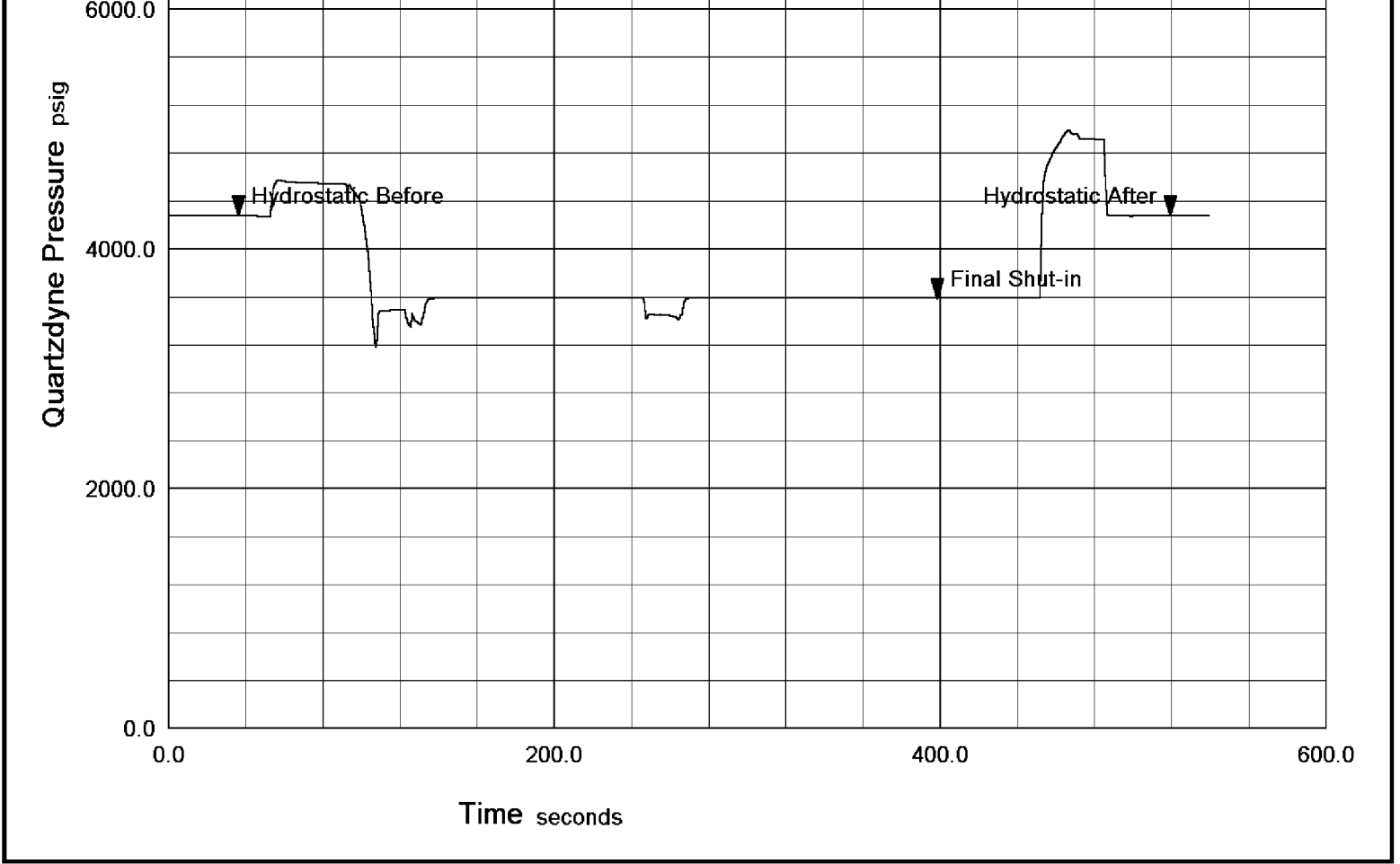
Pretest 1 at 2535.71 m

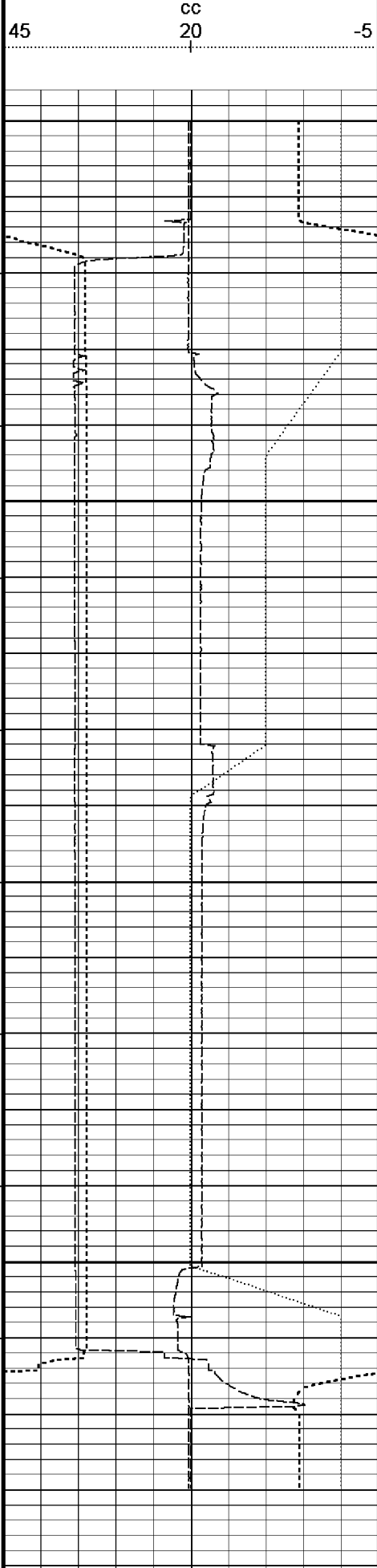
**Pressure - Time Plot**

File: C:\Data\Childers Cove\MCG098MFT008\_8A.dta  
Run Id: Pretest 2 at 2546.19 m  
Test Number: 2

File Date: 04-OCT-2005 21:28:04







Timing Marks  
every 60.0 sec

MFC Motor Current

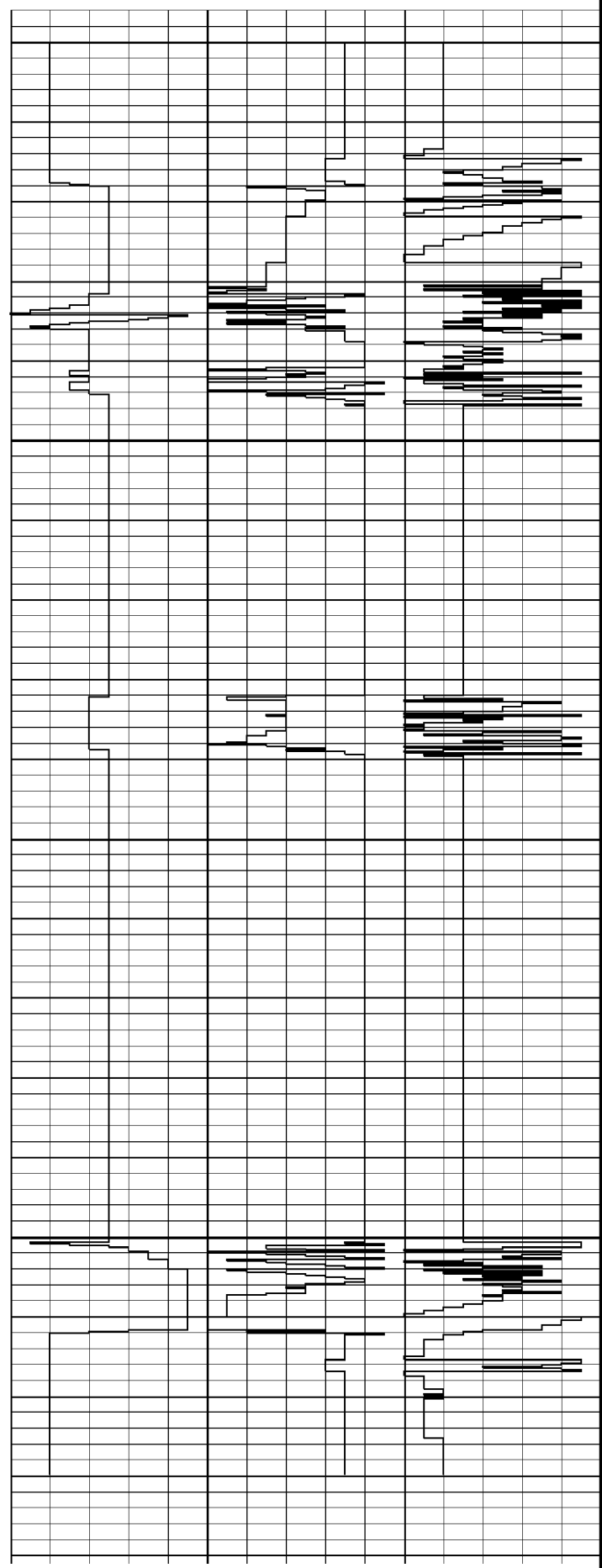
Replay  
Scale  
1:400

- 5.41
- 20.39
- 36.03
- 51.03
- 66.01
- 81.62
- 96.59
- 112.19
- 127.21
- 142.21
- 1.78
- 16.79
- 32.39
- 47.37
- 62.40
- 77.98
- 93.01
- 108.57
- 123.61
- 138.61
- 154.19
- 169.18
- 184.78
- 199.76
- 10.79
- 26.39
- 41.40
- 56.99
- 72.02

TPRE  
every  
0.25 in

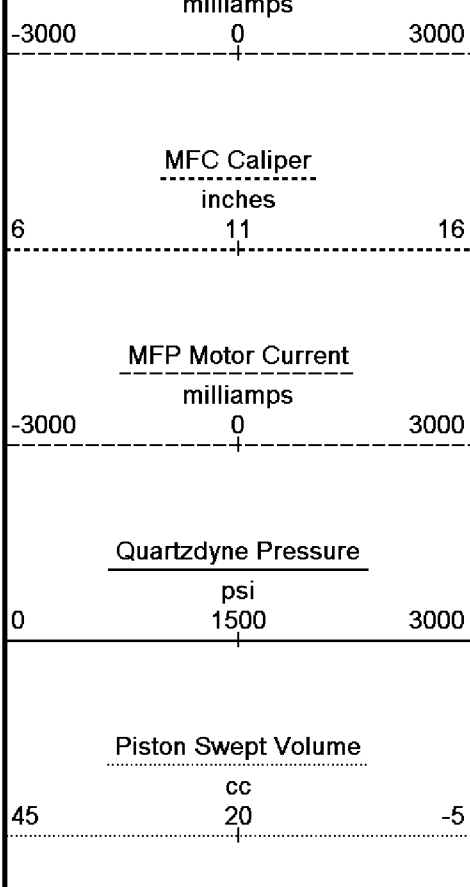
- 4272.06
- 4272.11
- 4272.13
- 4262.50
- 4551.27
- 4541.35
- 4504.92
- 3477.33
- 3341.41
- 3583.73
- 3583.78
- 3583.79
- 3583.82
- 3583.86
- 3583.88
- 3583.90
- 3411.92
- 3429.72
- 3583.74
- 3583.73
- 3583.73
- 3583.73
- 3583.73
- 3583.73
- 3583.74
- 3583.74
- 3583.75
- 3583.77
- 3583.79
- 4844.68
- 4913.65
- 4271.73
- 4271.52
- 4271.98
- 4272.01

Quartzdyne Pressure  
psi  
every 0.25 in



Quartzdyne 100's  
Quartzdyne 10's  
Quartzdyne 1's





Replay  
Scale  
1:400

Time Based Data - Notional Logging Speed 10.00 metres/min  
Filename: C:\Data\Childers Cove\MCG098MFT008\_8A.dta  
System Configuration Dates: Logged 17-JUN-2004: Processed 17-JUN-2004: Plotted 17-JUN-2004:

Plotted on 05-OCT-2005 07:33

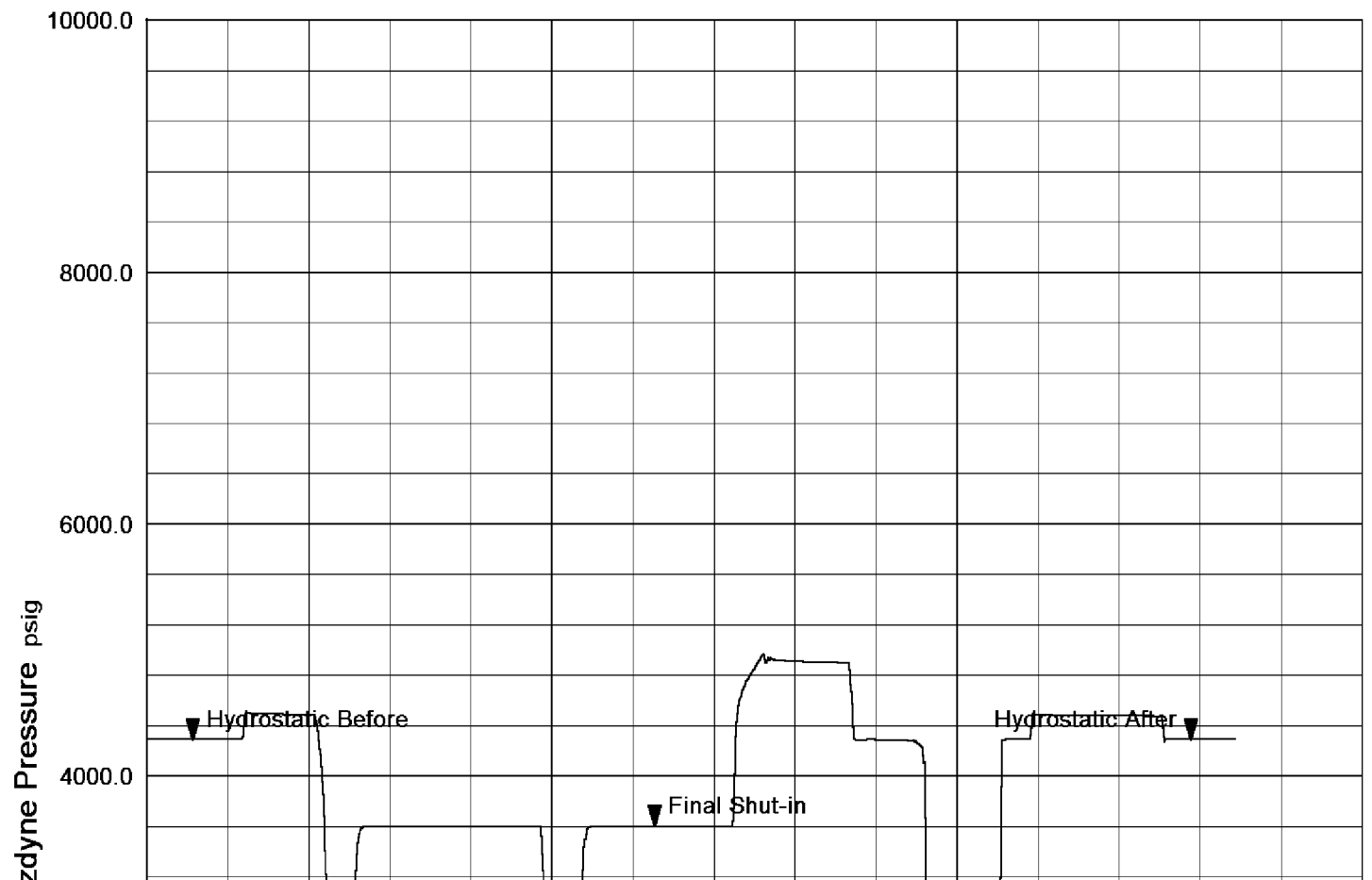
Recorded on 04-OCT-2005 21:54

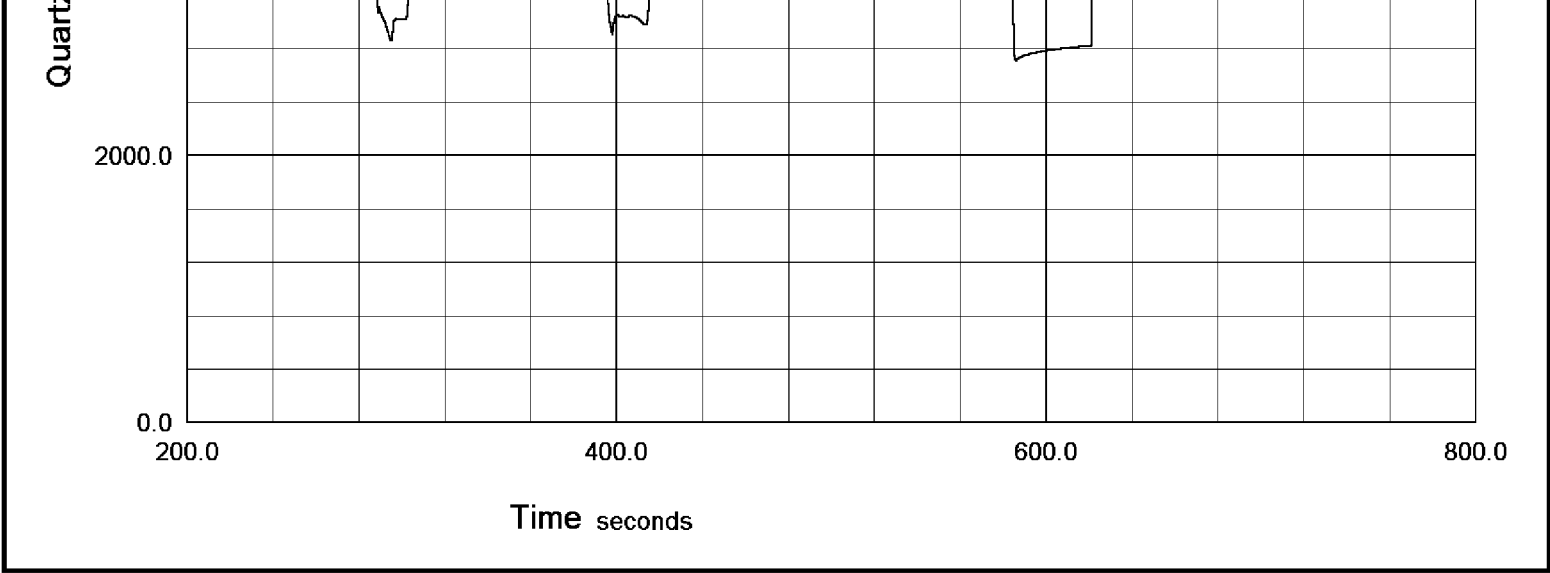
↑ Pretest 2 at 2546.19 m ↑

## Pressure - Time Plot

File: C:\Data\Childers Cove\MCG098MFT008\_9A.dta  
Run Id: Pretest 3 at 2554.51 m  
Test Number: 3

File Date: 04-OCT-2005 21:28:18





↓

Pretest 3 at 2554.51 m

↓

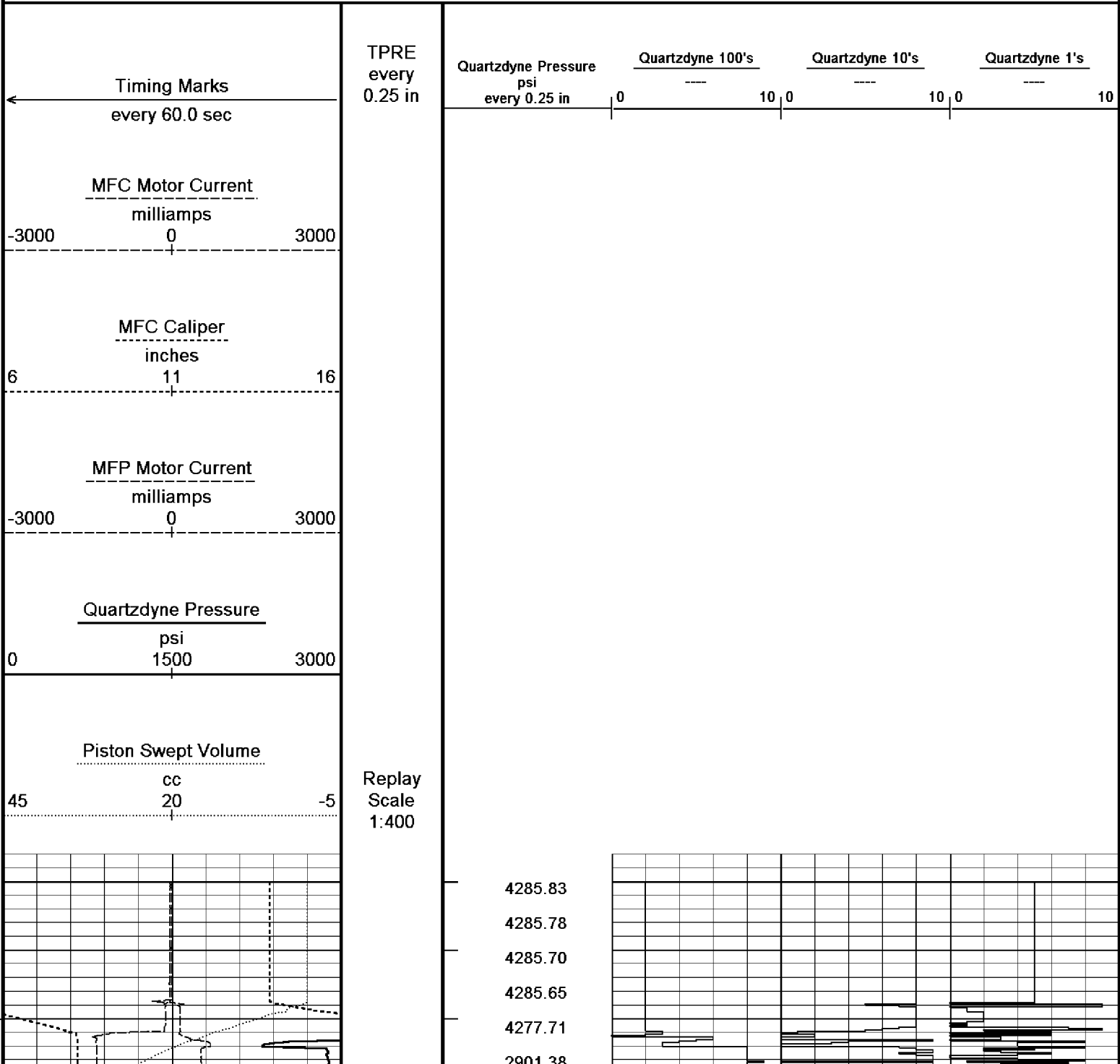
Time Based Data - Notional Logging Speed 10.00 metres/min

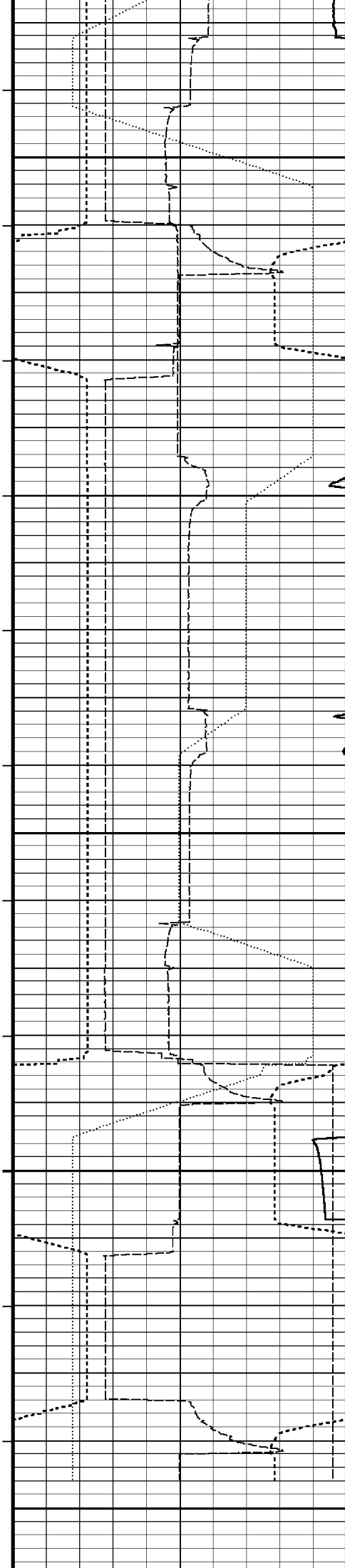
Plotted on 05-OCT-2005 07:33

Filename: C:\Data\Childers Cove\MCG098MFT008\_9A.dta

Recorded on 04-OCT-2005 22:05

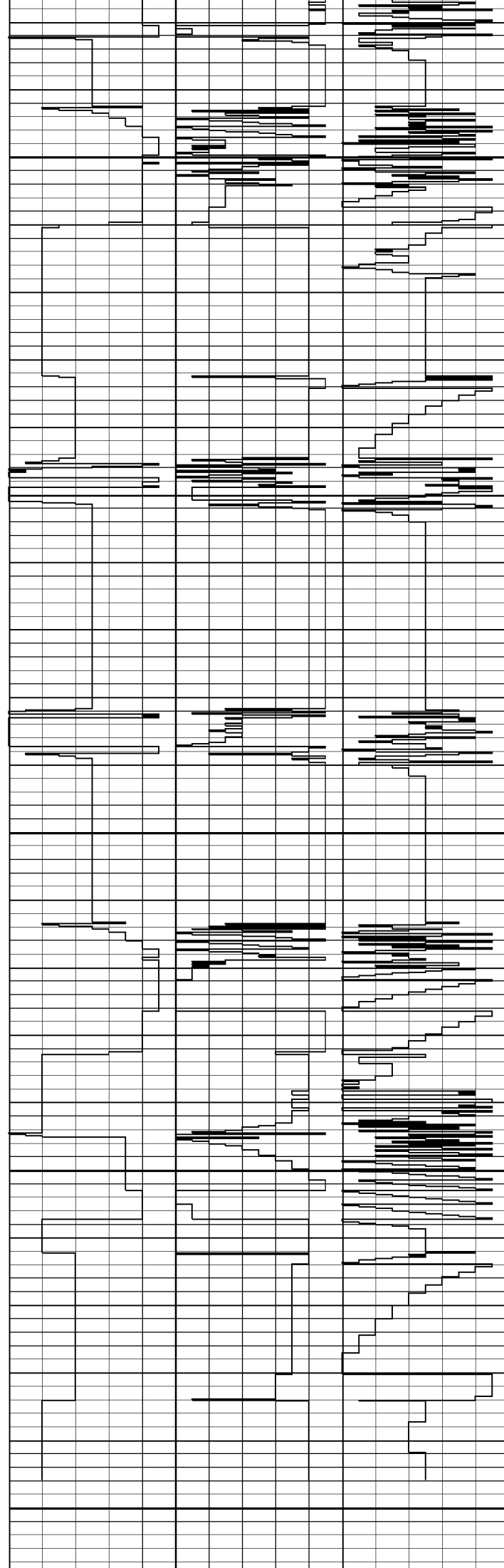
System Configuration Dates: Logged 17-JUN-2004: Processed 17-JUN-2004: Plotted 17-JUN-2004:

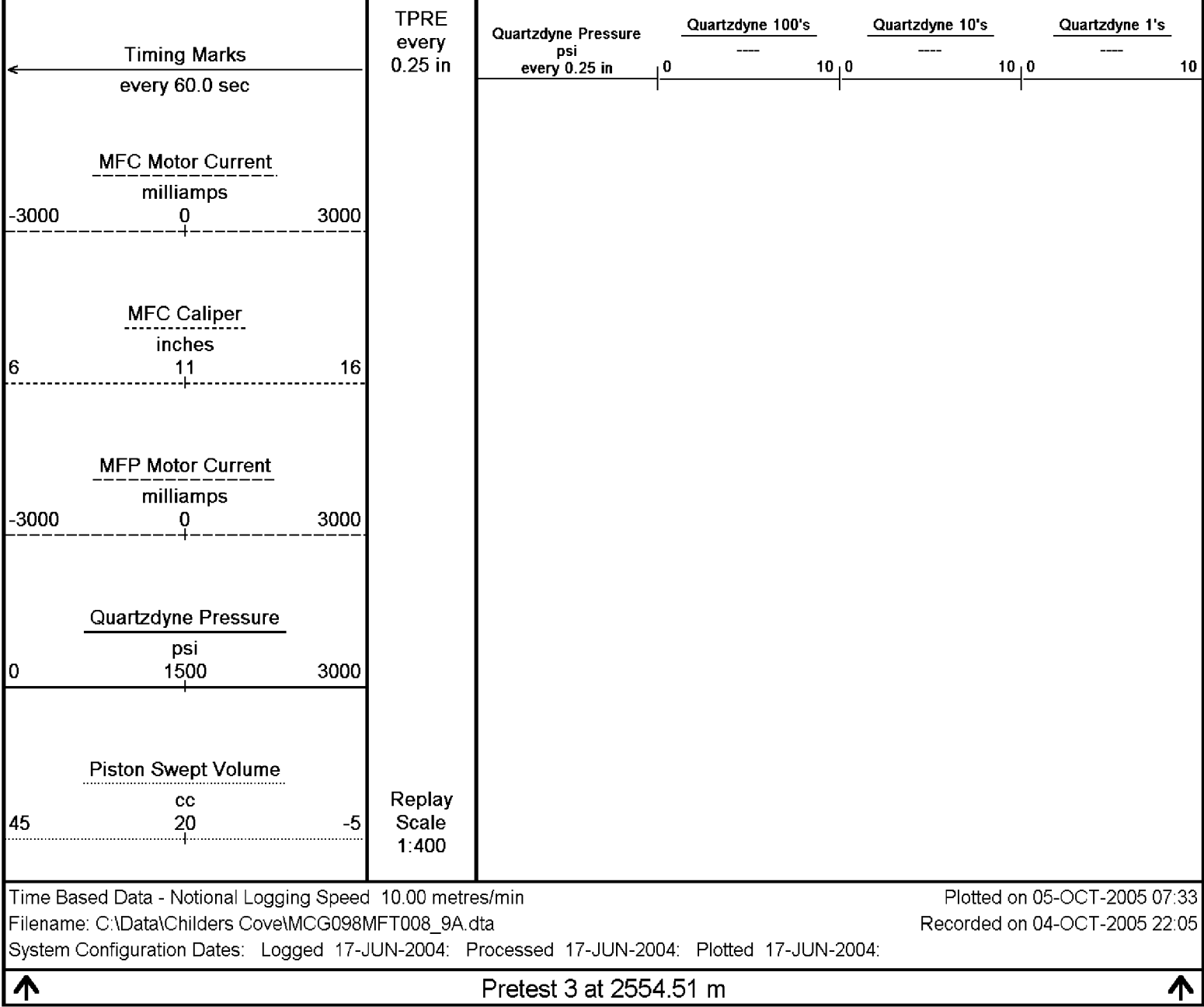




15.00  
29.98  
45.61  
61.21  
76.21  
91.20  
106.20  
121.81  
136.81  
152.41  
11.37  
26.39  
42.01  
57.01  
72.62  
87.61  
102.61  
10.20  
25.19  
40.78  
55.81  
70.79  
86.42  
5.39  
21.02  
36.00  
51.01  
66.60  
81.58  
97.18  
112.19  
127.18  
142.81  
157.79  
5.40  
20.40  
35.41  
51.01  
66.01

2391.58  
2912.86  
3595.20  
3595.46  
4878.30  
4840.51  
4830.60  
4285.69  
4284.12  
4285.37  
4285.38  
4286.00  
4485.57  
4482.27  
2969.68  
3592.03  
3595.51  
3595.58  
3595.60  
3595.64  
3595.73  
3038.94  
2979.59  
3595.35  
3595.52  
3595.53  
3595.54  
4235.39  
4895.46  
4904.65  
4897.20  
4281.84  
4280.10  
4231.37  
2773.77  
2805.50  
4285.52  
4478.94  
4474.23  
4471.92  
4470.14  
4285.25  
4284.81  
4285.08





BEFORE SURVEY CALIBRATION			
C:\Data\Childers Cove\MCG098MFT008_6A.dta			
General Constants All 000			
General Parameters			
Mud Resistivity	0.250	ohm-metres	
Mud Resistivity Temperature	17.100	degrees C	
Water Level	0.000	metres	
Density/Neutron Processing	Wet Hole		
Hole/Annular Volume and Differential Caliper Parameters			
HVOL Caliper 1	Bit Size		
HVOL Caliper 2	Bit Size		
Annular Volume Diameter	7.000	inches	
Caliper for Differential Caliper	None		
Rwa Parameters			
Porosity used	N/A		
Resistivity used	N/A		
RWA Constant A	N/A		
RWA Constant M	N/A		
Quartzdyne Calibration Constants and Coefficients MFT 008			
Serial Number	156002		
Calibration Date	25-JAN-02		
Temperature polynomial order	3		
Pressure polynomial order	3		
Temperature scaling factor	0.0100000000000		

Pressure scaling factor 0.01000000000000  
 Temperature offset frequency 55313.00000000000000  
 Pressure offset frequency 20231.00000000000000  
 Span adjustment 1.00000000000000  
 Offset adjustment 0.000000000000e+000

	T0	T1	T2	T3	T4
P0	1.06712e+001	-5.02859e-001	-2.09468e-002	8.27075e-006	0.00000e+000
P1	4.23434e+001	-2.23910e-002	2.56713e-005	-6.06661e-008	0.00000e+000
P2	-2.04657e-003	1.09786e-005	-2.68807e-008	7.75475e-011	0.00000e+000
P3	6.55210e-007	-2.45045e-009	2.80271e-011	-1.60433e-014	0.00000e+000
P4	0.00000e+000	0.00000e+000	0.00000e+000	0.00000e+000	0.00000e+000

Caliper Calibration MFT 008

Base Calibration on 4-OCT-2005,19:32  
 Field Calibration on 4-OCT-2005,19:32

Base Calibration

Reading No	Measured	Calibrator Size (in)
1	4371	4.00
2	4944	6.00
3	5833	8.00
4	7161	10.00
5	0	0.00
6	N/A	N/A

Field Calibration

Measured Caliper (in)	Actual Caliper (in)
8.01	8.00

# DOWNHOLE EQUIPMENT

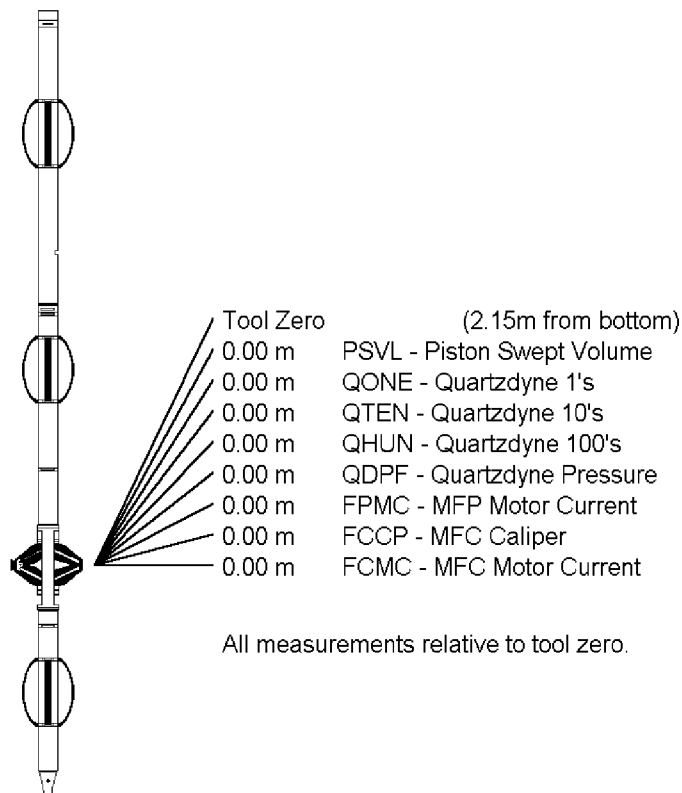
C:\Data\Childers Cove\MCG098MFT008\_6A.dta

Compact Gamma  
 MCG 98 Length: 2.65 m Weight: 63.9 lb

Compact Repeat Formation Tester  
 MFT 8 Length: 4.17 m Weight: 112.4 lb

Pressure Bung + Hole Finder  
 HFS 3 Length: 0.28 m Weight: 6.6 lb

Total Length: 7.10 m Weight: 183.0 lb



COMPANY	ORIGIN ENERGY RESOURCES LIMITED		
WELL	CHILDERS COVE 1		
FIELD	ONSHORE OTWAY BASIN		
PROVINCE/COUNTY	VICTORIA		
COUNTRY/STATE	AUSTRALIA		

Elevation Kelly Bushing	51.50	metres	First Reading	2554.50	metres
Elevation Drill Floor	51.50	metres	Depth Driller	2658.00	metres
Elevation Ground Level	46.20	metres	Depth Logger	2557.50	metres

FORMATION TESTER



FORMATION TESTER

TIME LOG

BUILD-UP PLOTS